



# Mermerli

Marble

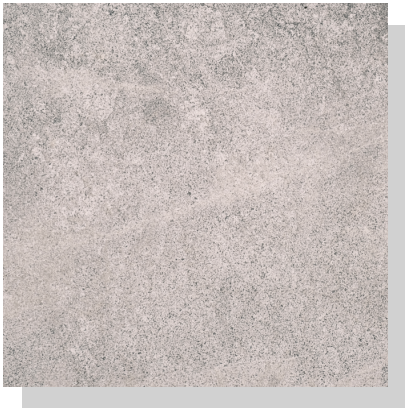
LITHIC  
AUSTRALIA



Finishes



Honed



Sand Blasted

Type And Size (mm)

Finish	Paver	Tile	Slab	Cobblestone	Wall Cladding	Custom
Honed		15x610x610				
Sand Blasted	30x610x406	15x610x406				

## Sealing Requirement

Optional



Recommended



Required



## Applications



Interior Walling (Wet & Dry)



Exterior Walling (Wet & Dry)



Mechanically Fixed Walling



Light Traffic



Pool Surrounds



Interior Flooring (Wet & Dry)



Exterior Flooring (Wet & Dry)



Paving Pedestals\*



Heavy Traffic



Vehicular Traffic\*

\*Contact us for specific requirements

## Stone Properties

Property	Abrasion Strength (cm <sup>3</sup> /50cm <sup>2</sup> )	Bulk Density (kg/m <sup>3</sup> )	Compressive Strength (Mpa)	Flexural Strength Under Load (Mpa)	Open Porosity (%)	Salt Resistance	Slip Resistance (SRV)
Test Method	EN 14157	EN 1936	EN 1926	EN 12372	EN 1936	AS/NZS 4456.10	AS 4586
Result	15.2	2698	104.47	7.85	2.83	AA	P1-P5

- General technical data; please contact us for specific projects. We offer materials with characteristics which can be changed to suit your requirements.
- The technical data and in general the information contained in this technical sheet is based on tests considered to be reliable. We do not guarantee their accuracy when compared to subsequent tests due to the inherent variability of natural stone. If test results are critical please request reports for each critical factor.

# Cleaning & Maintenance

Natural stone is considered a high quality covering, which fulfils all the physical, chemical, and building requirements to carry out a good project with proven success, thanks to its durability and the low maintenance cost in comparison to other materials like artificial stone.



The hardness and lifespan of natural stone can be increased with an appropriate choice of finish, treatment and further maintenance.



Water is the best cleaning solution. However, when it comes to cleaning and disinfecting, it is advisable to use pH balanced cleaners (7-10 pH).



Never use aggressive detergents such as bleach, ammonia, descalers, etc.



Never use metal utensils (such as steel wool) as they may scratch the surface.

In case of stains, try to clean by mixing dishwashing liquid with warm water and scrub with a soft kitchen broom. This will solve a majority of stains that you will come across during your stones life.

If the stain persists, click [HERE](#) or scan the QR code to read an article on how to clean natural stone depending on the type of stain.

The article includes solutions for:

- General Maintenance
- Rust
- Efflorescence
- Organic Stains
- Soap Scum
- Cement & Grout Residue
- Grease/Fat/Oil
- Epoxy, Wax, Glue
- Dirty Grout

## How To Clean Natural Stone



### Lithic Australia

39 Canavan Drive  
Beresfield NSW  
2322 Australia  
Phone: (02) 4966 8474  
[info@lithicaustralia.com.au](mailto:info@lithicaustralia.com.au)

[www.lithicaustralia.com.au](http://www.lithicaustralia.com.au)



133 Victoria Road  
Rozelle NSW  
2039 Australia  
Phone: (02) 9030 8454  
[info@lithicaustralia.com.au](mailto:info@lithicaustralia.com.au)